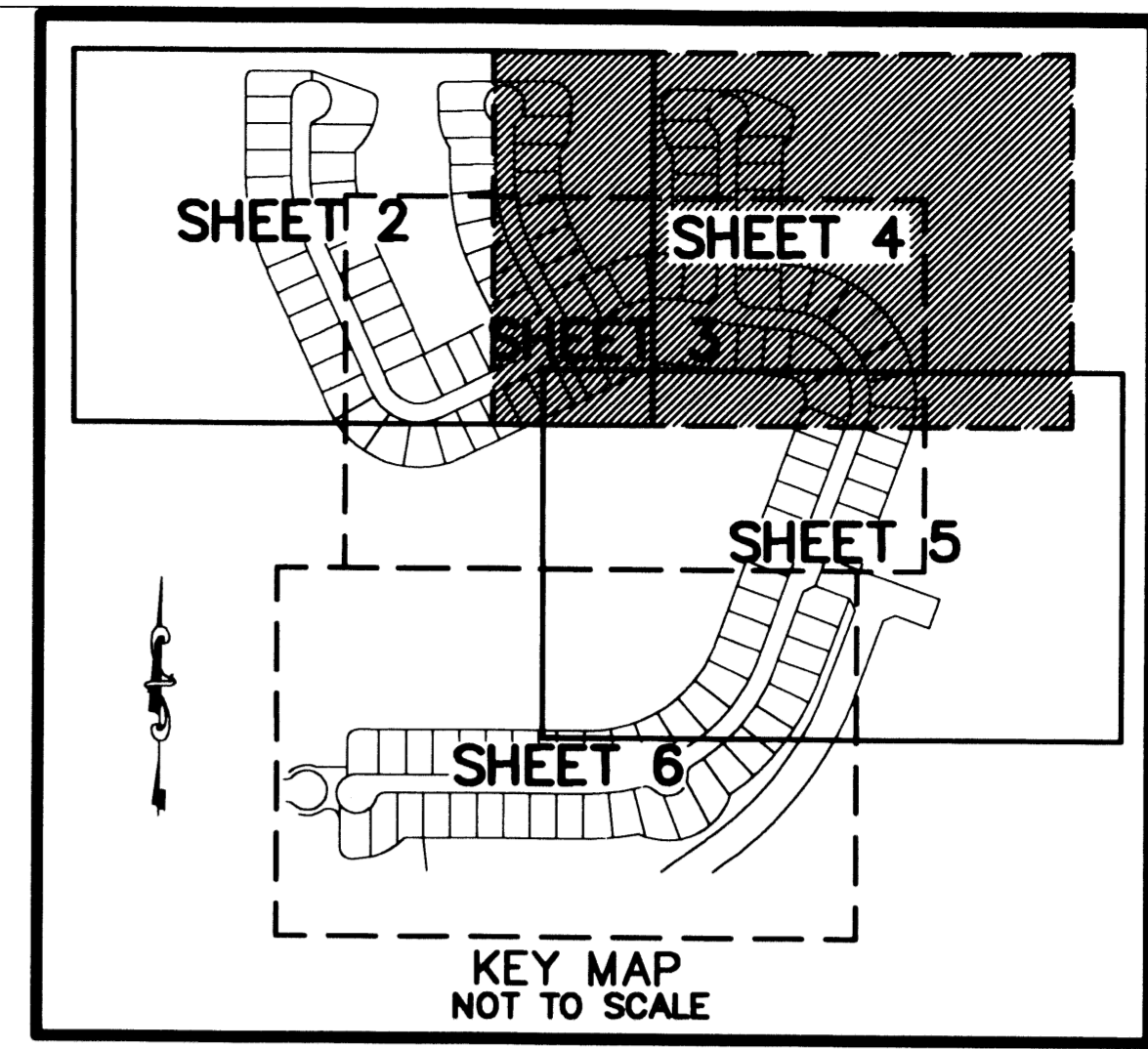


# VILLAGES OF WINDSOR TRACT F/G REPLAT

BEING A REPLAT OF TRACT F, VILLAGES OF WINDSOR PLAT 5, AS RECORDED IN PLAT BOOK 100 PAGES 27 THROUGH 41,  
OF THE PUBLIC RECORDS OF PALM BEACH COUNTY, FLORIDA, LYING IN SECTIONS 5 AND 8, TOWNSHIP 45 SOUTH, RANGE 42 EAST, PALM BEACH COUNTY, FLORIDA

THIS INSTRUMENT PREPARED BY  
DAVID P. LINDLEY  
OF  
**CAULFIELD and WHEELER, INC.**  
SURVEYORS - ENGINEERS - PLANNERS  
7301-A WEST PALMETTO PARK ROAD, SUITE 100A  
BOCA RATON, FLORIDA 33433 - (561)392-1991  
OCTOBER - 2002



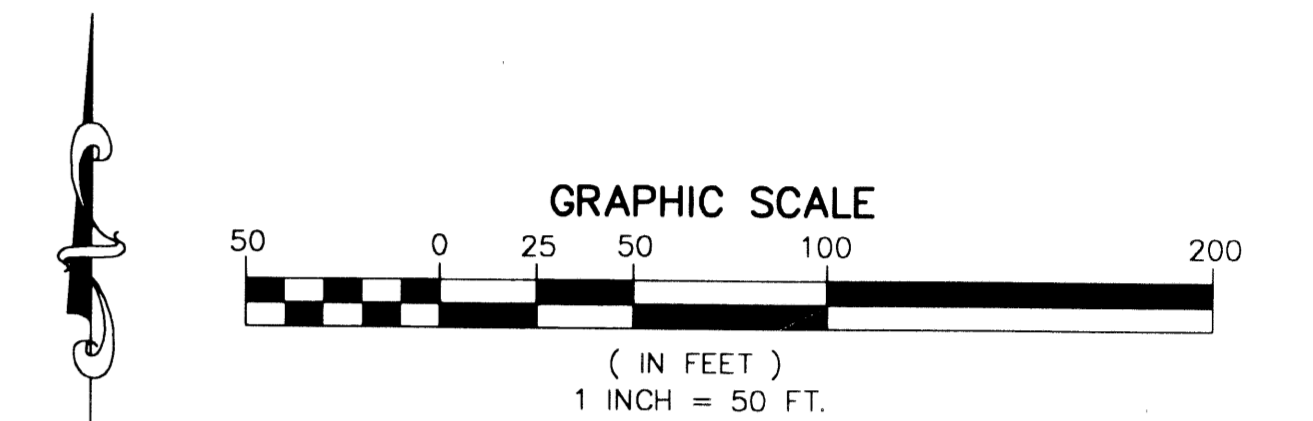
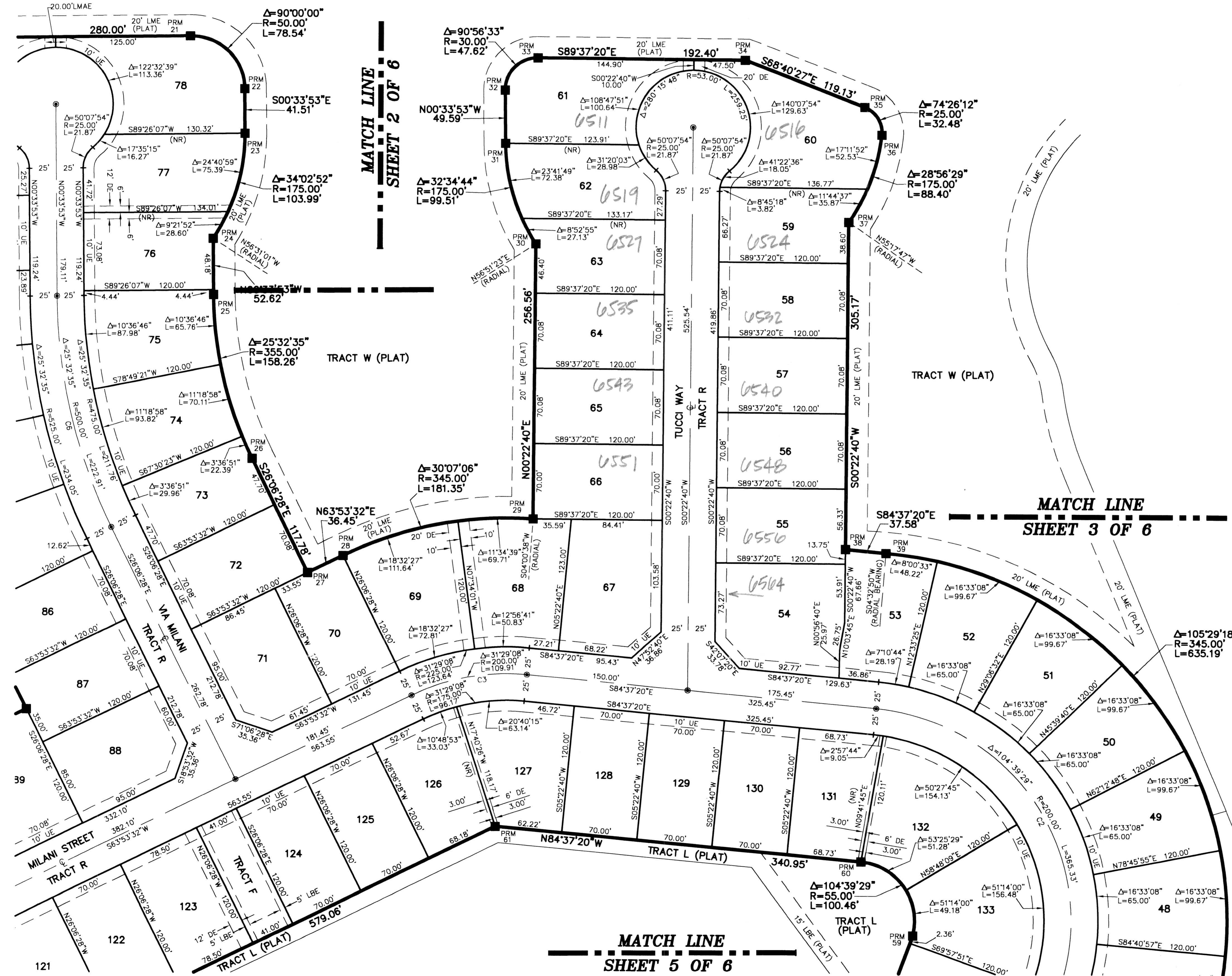
**64**

STATE OF FLORIDA  
COUNTY OF PALM BEACH  
THIS PLAT WAS FILED FOR  
RECORD AT \_\_\_\_\_ M.  
THIS \_\_\_\_\_ DAY OF \_\_\_\_\_  
A.D. 2003 AND DULY RECORDED  
IN PLAT BOOK \_\_\_\_\_ ON  
PAGES \_\_\_\_\_ AND \_\_\_\_\_

DOROTHY H. WILKEN  
CLERK CIRCUIT COURT

BY: \_\_\_\_\_  
DEPUTY CLERK

**SHEET 4 OF 6**



**NOTES**  
**COORDINATES, BEARINGS AND DISTANCES**  
COORDINATES SHOWN ARE GRID  
DATUM = NAD 83 1990 ADJUSTMENT  
ZONE = FLORIDA EAST  
LINEAR UNIT = US SURVEY FEET  
COORDINATE SYSTEM 1983 STATE PLANE  
TRANSVERSE MERCATOR PROJECTION  
ALL DISTANCES ARE GROUND  
SCALE FACTOR = 1.00001965  
GROUND DISTANCE X SCALE FACTOR = GRID DISTANCE  
BEARINGS AS SHOWN HEREON ARE GRID DATUM, NAD 83 1990  
ADJUSTMENT, FLORIDA, EAST ZONE.  
COORDINATES SHOWN ON THE CONTROL P.R.M.S MEET OR  
EXCEED THE LOCAL ACCURACY REQUIREMENTS OF A 2  
CENTIMETER GEODETIC CONTROL SURVEY.

S20°02'09"W (PLAT BEARING) 00°24'17" = BEARING ROTATION  
S19°37'52"W (GRID BEARING) (PLAT TO GRID)  
EAST LINE THIS PLAT COUNTERCLOCKWISE

**COORDINATE TABLE**

PRM	NORTHING	EASTING
1	816165.49	923748.95
2	816287.44	923399.90
3	816648.63	923231.69
4	816916.37	923171.41
5	817159.93	923169.69
6	817180.07	923189.55
7	817181.15	923342.54
8	817125.10	923498.21
9	817095.99	923518.04
10	816971.85	923461.03
11	816918.42	923461.41
12	816771.06	923494.58
13	816439.67	923648.91
14	816530.84	923831.67
15	816636.23	923779.09
16	816913.25	923771.35
17	816979.31	923710.23
18	817076.77	923678.58
19	817134.82	923677.59
20	817155.16	923697.25
21	817159.93	923772.22
22	817110.75	924028.06
23	817069.24	924028.76
24	816970.77	924000.42
25	816918.16	924001.31
26	816765.69	924038.60
27	816660.30	924091.17
28	816676.57	924123.79
29	816712.17	924299.50
30	816988.73	924399.38
31	817062.48	924270.25
32	817112.07	924269.41
33	817142.58	924299.40
34	817148.67	924491.80
35	817100.13	924603.08
36	817074.44	924619.04
37	816992.17	924589.37
38	816887.00	924589.52
39	816683.74	924626.95
40	816223.72	924926.99
41	815879.92	924804.35
42	815911.83	924714.87
43	815856.48	924687.99
44	815804.56	924777.47
45	815576.65	924696.18
46	815273.02	924469.83
47	815163.69	924228.52
48	815148.36	924093.21
49	815144.95	923611.13
50	815089.30	923503.63
51	815085.74	923474.21
52	815115.31	923440.61
53	815230.17	923439.80
54	815307.18	923456.77
55	815403.87	923456.09
56	815434.08	923485.87
57	815436.36	924091.17
58	815674.08	924423.03
59	816321.16	924653.84
60	816394.43	924606.80
61	816423.98	924267.12

**CURVE TABLE**

CURVE NO.	CHORD BEARING	CHORD DISTANCE
C1	S55°01'04"W	573.32'
C2	N32°17'36"W	316.61'
C3	S79°38'06"W	108.53'
C4	N70°20'15"W	161.94'
C5	N12°17'01"W	212.75'
C6	N13°20'10"W	221.06'

SUBDIVISION VILLAGES OF WINDSOR TRACT F/G REPLAT  
 BOOK 100 PAGE 64  
 FLOOD ZONE B FLOOD MAP # 170A  
 QUAD # 41 ZONING PUD  
 SE ZIP CODE 33467  
 TAZ 10210  
 PUD NAME VILLAGES OF WINDSOR